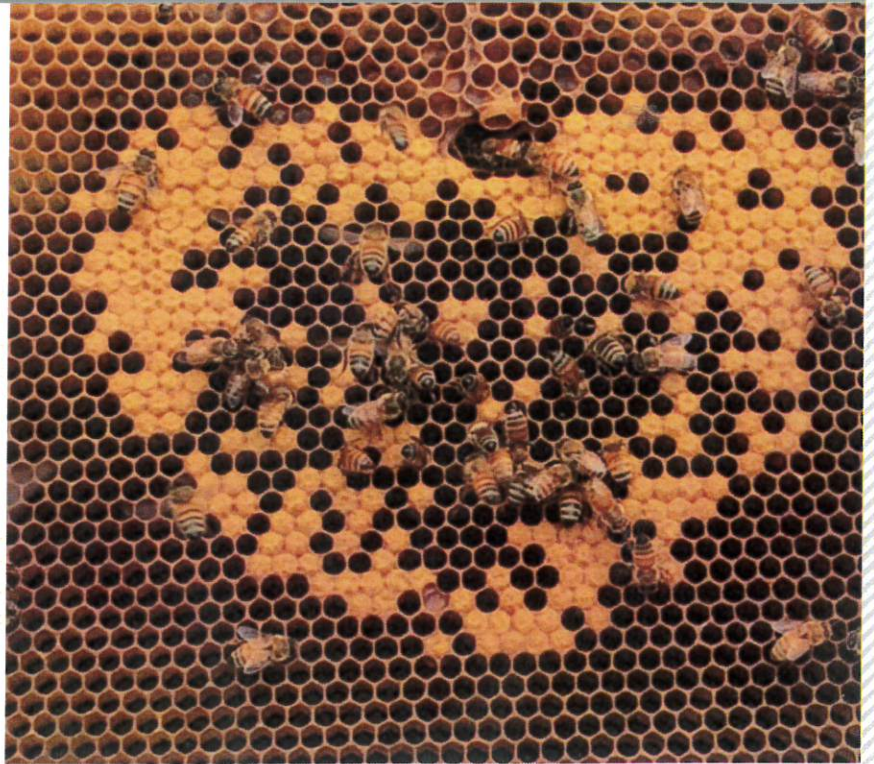
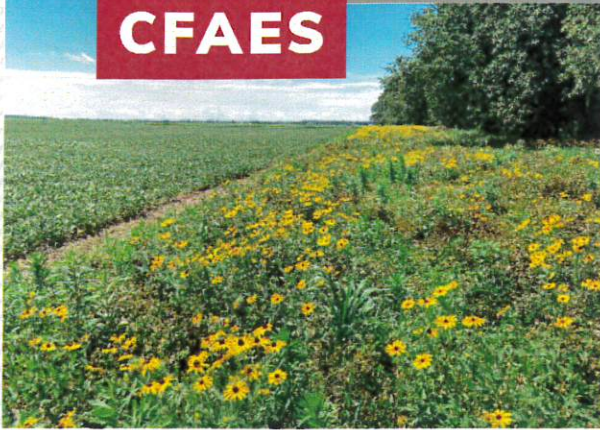


CFAES

DEPARTMENT OF ENTOMOLOGY



# Beekeeping Academy Certificate Program **NEW!** STARTING MARCH 30, 2025

Content for this 6-week online course is delivered in a series of online lectures and readings with 3-5 hours of course work per week along with a weekly quiz to earn the certificate.

**CONTACTS:** Dr. Chia Lin [lin.724@osu.edu](mailto:lin.724@osu.edu) or Dr. Reed Johnson [johnson.5005@osu.edu](mailto:johnson.5005@osu.edu)

## **Bee Biologist**

An introduction to the biology of honey bees, including communication, development, queen and drone biology and colony reproduction. The course will also cover bee ecology, including pollination, planting for bees and identifying other common wild pollinators. This six-week course will be 100% online. Participants are expected to complete 3 – 5 hours of course work per week and a weekly quiz.

*\$150 enrollment fee*

## **Bee Biologist Field Day**

This in-person one day follow-up to the on-line Bee Biologist Certificate provides an opportunity for you to try your hand at interpreting the honey bee waggle dance, identifying the flowers that make up honey and getting familiar with the diversity of pollinators. Saturday, May 17, 2025 at the Rothenbuhler Bee Lab in Columbus.

Enrollment in the Bee Biologist online course is required to participate in the field day.

*\$60 enrollment fee*

Scan to submit your email for updates on course registration, or go to  
<https://go.osu.edu/Cx2A>



THE OHIO STATE UNIVERSITY

COLLEGE OF FOOD, AGRICULTURAL,  
AND ENVIRONMENTAL SCIENCES

**Entomology.** Explore more.

[entomology.osu.edu](http://entomology.osu.edu)